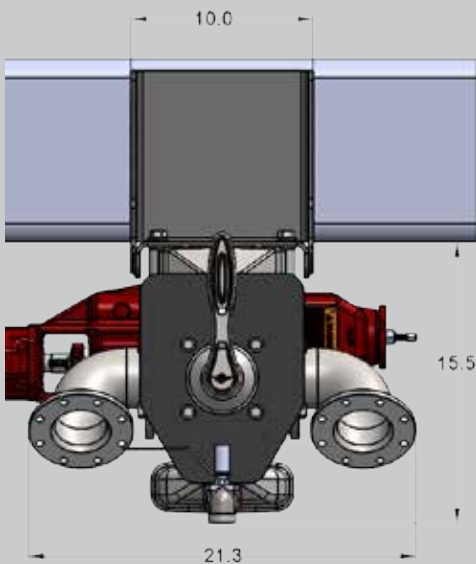
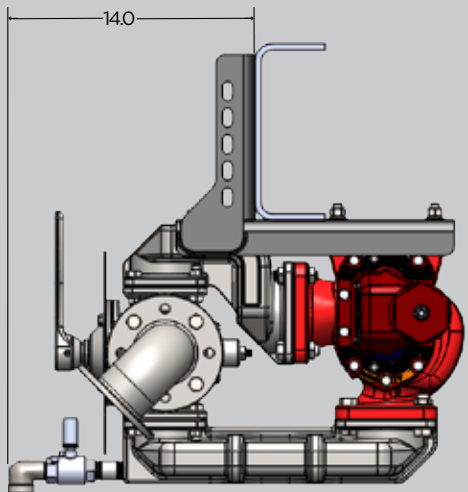


PT CHEM
SYSTEM KIT
140400



PT CHEM SYSTEM



LOADING
POSITION



NEUTRAL



UNLOADING
POSITION

NEVER BLOW A HOSE AGAIN

PT CHEM SYSTEM:

The PT Chem System brings a new era of safety to the chemical transport industry. Utilizing a four-way valve system, the PT Chem System greatly reduces the potential for spills and puts the control back in the hands of the driver by putting their boots on the ground while loading and unloading hazardous chemical liquids. This provides protection for both the environment and the driver. Item 140400 Chem System Kit





PROTECTING THE ENVIRONMENT. IMPROVING DRIVER SAFETY.

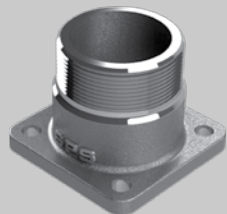
At a glance:

- 316 Stainless Steel
- 127 lbs (without pump)
- Teflon encapsulated Viton® O-rings
- Compatible with Roper, Ranger and equivalent gear pumps
- Protects the driver and the environment
- 100% made in the USA

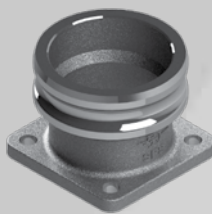


Includes additional fittings!

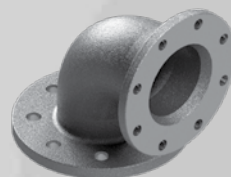
Additional Parts:



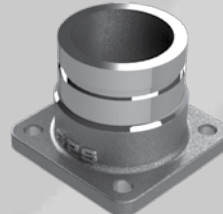
30BPFX30NPTM



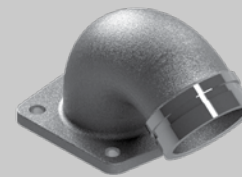
30BPFX30A



30BPFX30TTF



30BPFX30VG



30BPFX30VG

FEATURES & BENEFITS:

- 316 Stainless Steel components
- Pump runs at one speed and one rotation - increased pump and packing life
- Neutral position - no flow, no pressure
- Veneered flow control - no cavitation or over-pressurization
- Fully reversible
- Relief valve protection in both directions of flow - never blow a hose again
- Tactile feedback - driver knows if they are pumping against a closed valve
- O-ring sealing surfaces - no gaskets or sealant required
- Drive shaft or hydraulically driven - mounts on either side of truck or trailer
- Uses standard gear pump designs - available nationwide
- The system design promotes the driver to be "feet on the street" - not in the cab of the truck
- The ability to pull product samples while pumping - keeps drivers off the tank
- 100% no retain - easy clean out and prevents over-pressurization
- Custom elastomers available, uses standard o-ring sizes reducing downtime
- Assembles in less than an hour
- Easy access to the pump for service and repair
- 100% made in the USA

PT COUPLING COMPANY / CALL 800.654.0320 / EMAIL: INFO@PTCOUPLING.COM / www.ptcoupling.com



Follow us on Twitter: [ptcouplingusa](https://twitter.com/ptcouplingusa)



Like us on Facebook: [ptcoupling](https://www.facebook.com/ptcoupling)

PT Coupling is
ISO 9001 Certified

