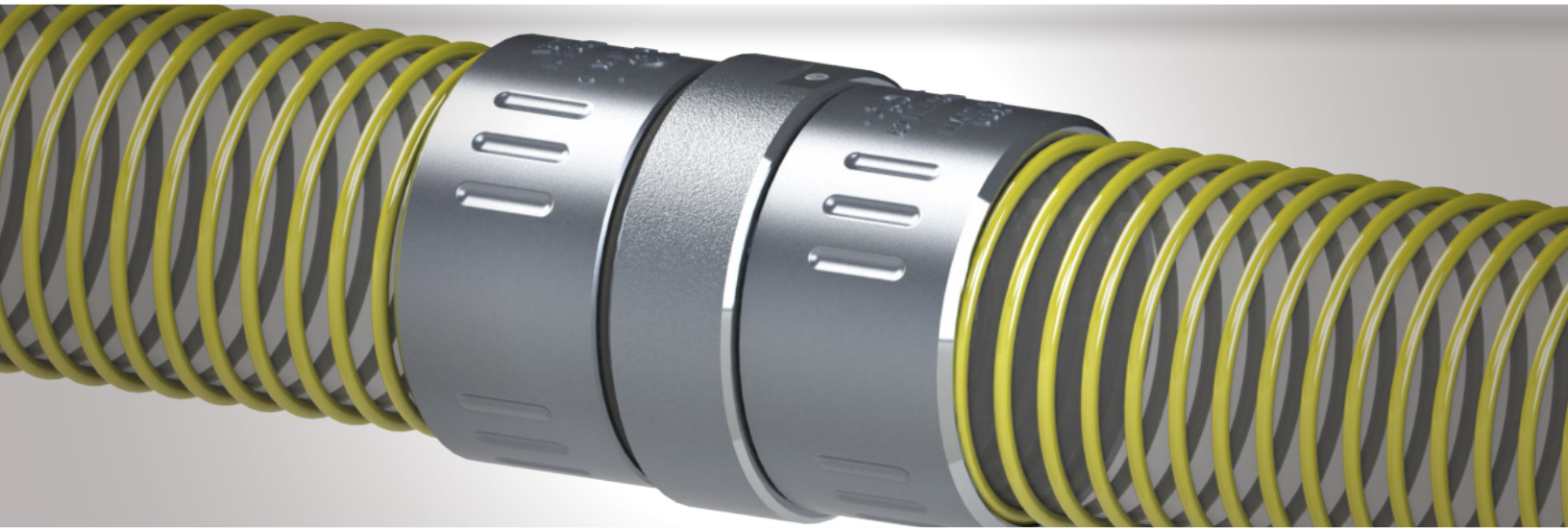




COUPLINGS AND MORE

MULCH HOSE FITTINGS



PT's **MULCH HOSE FITTINGS**, also referred to as "Helix Fittings", create a flexible, swivel seal with full assemblies that mate two mulch hoses fittings together to make a longer hose. The swivel feature assists with moving the assembly during service while preventing "hose kink".

The lightweight A356-T6 Aluminum fittings are durable when dropped and moved, however they are not rated to a high working pressure as blowing mulch is a low pressure application through light-phase conveyance. The nearly full flow ID of the swivel assemblies minimizes clogging and blockage from mulch and other dry bulk media (hydroseed, etc.) found in other fittings lacking a full flow design. In addition, the "no hose shank" full flow design allows for minimal fitting material exposure to media being transferred (enhanced fitting service life).

FEATURES:

- MADE IN THE USA
- Lightweight for easier handling
- Ease of Installation
- Swivels in service prevent hose kink
- Works with Mulch Hose & Mulch Blower Hose



Visit your local PT Representative
call 1-800-654-0320

www.ptcoupling.com



SWIVEL FITTING (HMSV)



C HELIX

E HELIX

*CAM & GROOVE
MULCH HOSE FITTINGS*



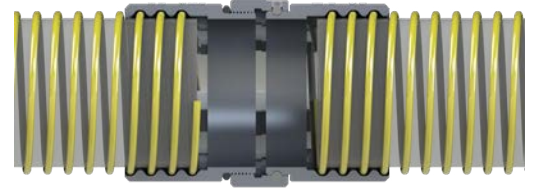
MULCH HOSE FITTINGS

SWIVELS

When choosing a left-hand versus right-hand fitting or full assemblies, this is dependent on the threading direction of the hose that will be utilized and the connecting point from where the media will be offloaded. PT's currently offers Mulch Hose Fittings for six different brands of hose.

CAM & GROOVE FITTINGS

Alternatively, single fittings are optimal for connecting the transfer point from a tank to hose while the full assemblies are ideal for preventing "hose kink" and allow access for tensionless movement of the hose.



HMSV (LEFT HAND) SWIVEL



SWIVEL FITTING (HMSV)

MULCH HOSE SWIVEL FITTINGS (SET)				
SIZE	RIGHT OR LEFT	ITEM NO.	DESCRIPTION	MATERIAL
4"	RIGHT HAND	60135016	40HMSV	ALUMINUM
	LEFT HAND	60135015	40HMSV	
5"	LEFT HAND	60135008	50HMSV	
	RIGHT HAND	60135009	50HMSV	



MS-NPSH

(EXPLODED VIEW)



FSSV-NPSH

MULCH HOSE SWIVEL FITTINGS (INDIVIDUAL)				
SIZE	RIGHT OR LEFT	ITEM NO.	DESCRIPTION	MATERIAL
4"	RIGHT HAND	60134006	40FSSV-NPSH HELIX ID RH AL	ALUMINUM
	RIGHT HAND	60134007	40MS-NPSH HELIX ID RH ALUM	
	LEFT HAND	60134008	40FSSV-NPSH LH HELIX ID	
	LEFT HAND	60134011	40MS-NPSH LH HELIX ID	
5"	LEFT HAND	60135000	50FSSV-NPSH LH HELIX ID	ALUMINUM
	LEFT HAND	60135004	50MS-NPSH LH HELIX ALUM	



C HELIX



E HELIX

MULCH HOSE CAM & GROOVE FITTINGS

MULCH HOSE CAM & GROOVE FITTINGS (INDIVIDUAL)				
SIZE	RIGHT OR LEFT	ITEM NO.	DESCRIPTION	MATERIAL
4"	RIGHT HAND	10003407L2	40C HELIX RH ALUM	ALUMINUM
	RIGHT HAND	100054021	40E HELIX RH ALUM	
5"	RIGHT HAND	10003501L2	50C HELIX RH ID ALUM	
	RIGHT HAND	100015011	50E HELIX ID ALUM RH ETCH	

Call your local PT Representative today or go online to find out how PT has solutions for your needs:

CALL 800-654-0320 / EMAIL: INFO@PTCOUPLING.COM



www.ptcoupling.com



@ptcouplingusa



/ptcoupling

